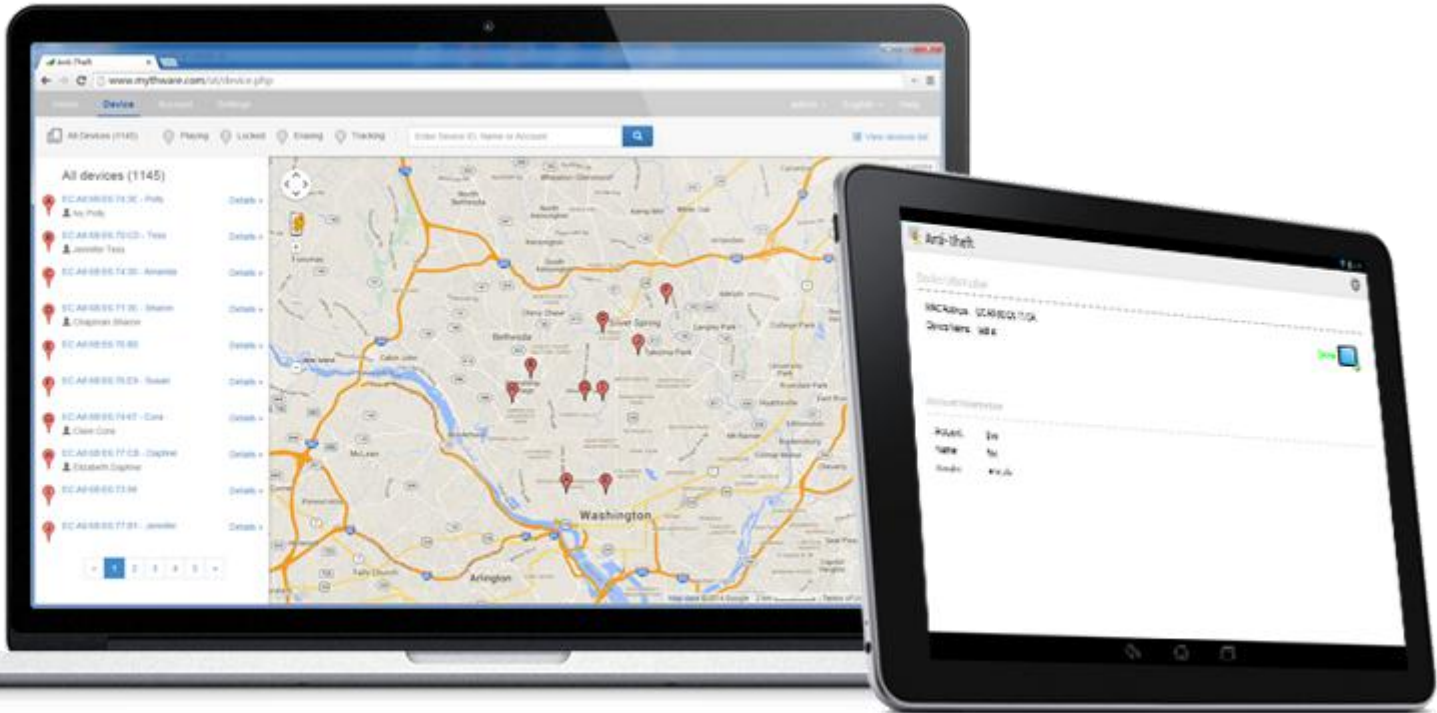


# Mythware

## Anti-Theft Software



Anti-Theft by Mythware has a Management Server that supports complex deployments and an easy-to-use Client Side which requires no student interactions. With the Management Server, the administrator can locate and protect the client devices and implement policies.

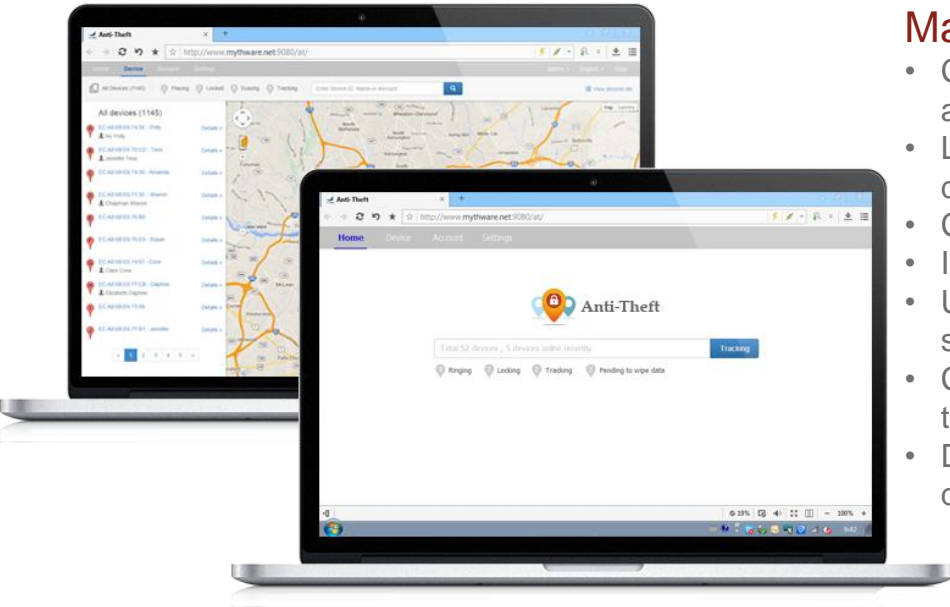
The using of the Anti-Theft by Mythware is a positive step toward guarding against theft and ensuring your personal privacy.

If the devices get lost or stolen, the administrator can use the Server Side of Anti-Theft by Mythware to spot the devices' locations on a map, play a sound at custom defined volume, send a message, lock the screen, trace its locations, and even erase the data on Android devices.

### Key Features

- Locate Client Device
- Play a Sound on Client Device
- Lock Client Device
- Remote Erase Android Client Device Data
- Trace Client Device
- Set Geofence for Clients
- Bind the Device to an Account
- Manage Account

# Server Side



Server Side

## Manage Account

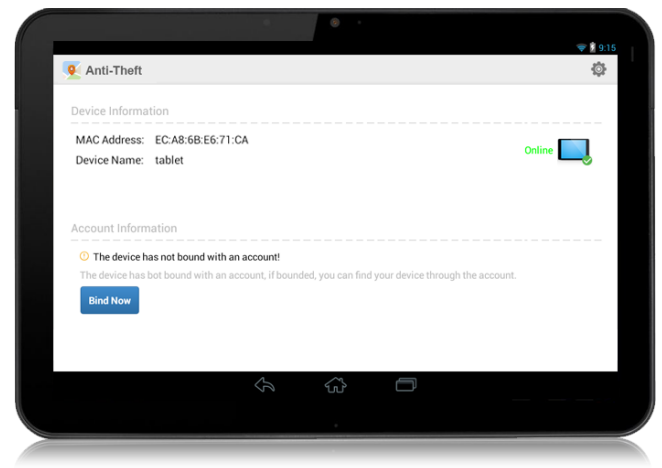
- Count the number of total accounts and the accounts attached devices.
- List all the accounts and their attached devices.
- Create new accounts from the server.
- Import accounts from the excel file.
- Unbind the device to the account from the server.
- Check and edit the detailed information for the account.
- Delete the account and unbind the attached devices.

## Manage Devices

- Count the number of total devices and online devices.
- Track a device on the map by device ID, device name or account.
- Locate all the devices on the map.
- Check the detailed information of the devices on the map.
- Make the device to automatically play a sound remotely
- Lock the selected device remotely.
- Erase the personal data on the selected Android device remotely.
- Track the location of the selected devices.
- Circle an area on the map to limit the locations of devices.

# Client Side

- Create a new account and bind devices to the account.
- Check the current status of the device.
- Check the detailed information of the device and the account.
- Unbind the device from the account.
- Change the server address.
- Upload the status to the server periodically.



Client Side

## System Requirement

Server Side	Apache 2.2.21 MySQL 5.5.16 (Community Server) PHP 5.3.8 (VC9 X86 32bit thread safe) + PEAR
Client Side	Android 3.x Android 4.x Android 5.x

Nanjing Mythware Information Technology Co., Ltd. reserves the right to revise this document and to make changes in the content hereof without obligation to notify any person or persons of such revisions or changes. Information in this document is subject to change without notice.

Tel: +86-25-66987979  
Web: [www.mythware.com](http://www.mythware.com)  
Email: [sales@mythware.com](mailto:sales@mythware.com)